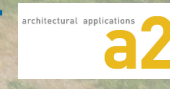


Sherwood Hwy 99W Pedestrian Bridge Project

Sherwood City Council Work Session

April 19, 2022



Meeting Goals:

Provide update to City Council on progress made and solicit input selection of a preferred alternative for further development.

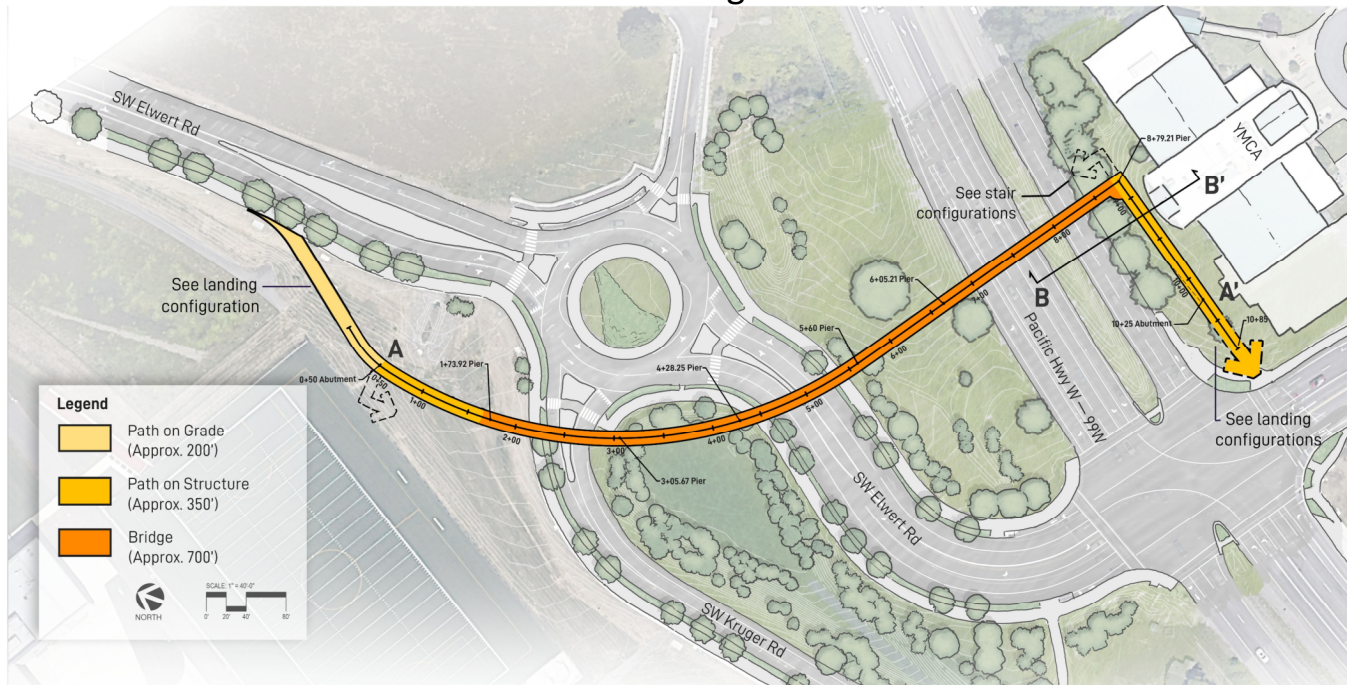
Agenda:

- Online Open House #2 Survey Results
- High School View Impacts
- Alternatives Analysis
- Action Needed

Online Open House #2 Survey Results

287 views and 58 survey participants.

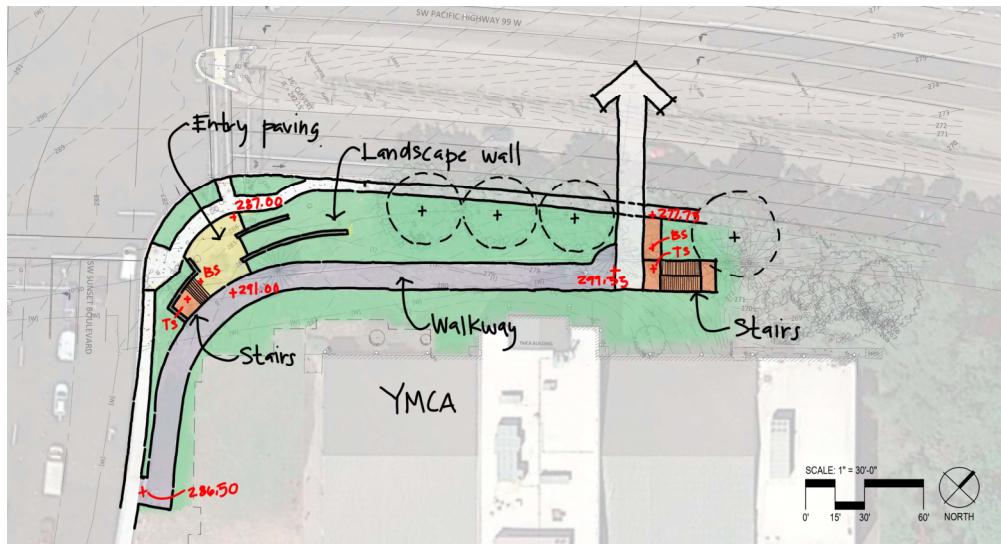
Alignment: Participants showed general support for the selected alignment and landings.



Preferred Alignment – Option A2

City of Sherwood

Hwy 99W Pedestrian Bridge Project



Plan View

Massing Perspective

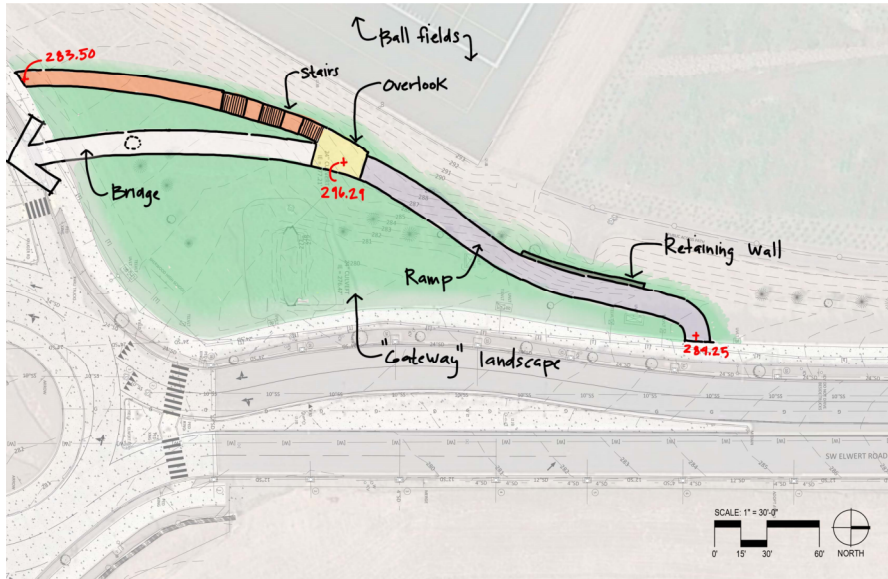


Alignment A2 - East Landing - Option 2

HWY 99W PEDESTRIAN BRIDGE PROJECT

City of Sherwood

Hwy 99W Pedestrian
Bridge Project



Plan View

Massing Perspective



Alignment A2 - West Landing

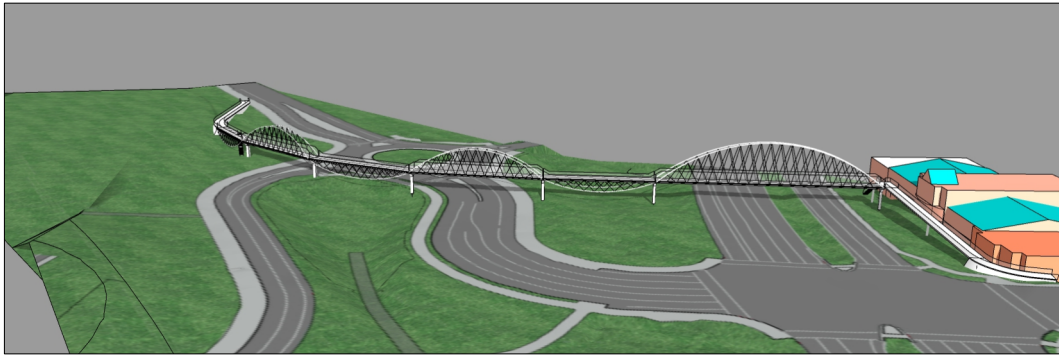
HWY 99W PEDESTRIAN BRIDGE PROJECT

City of Sherwood

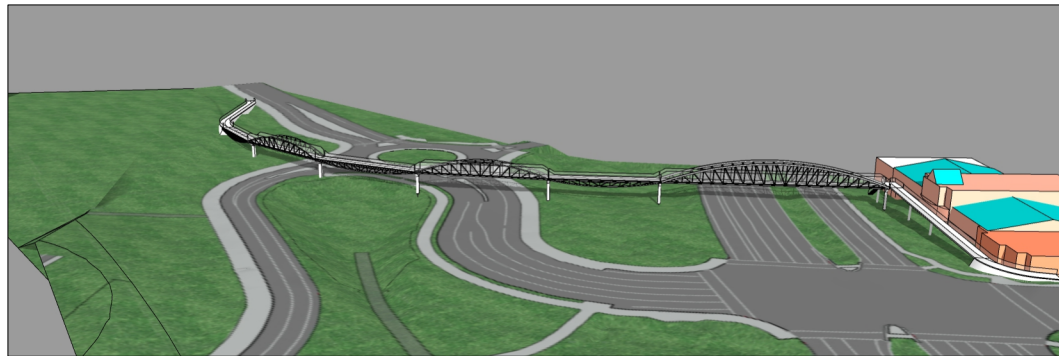
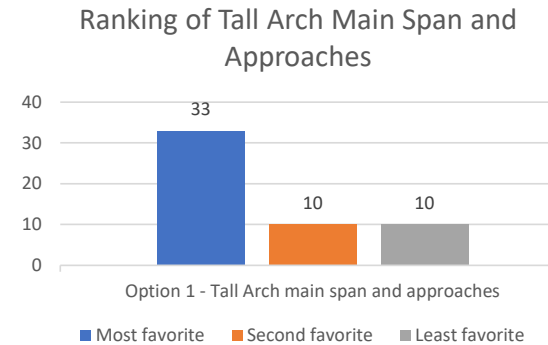
Hwy 99W Pedestrian
Bridge Project

Online Open House #2 Survey Results

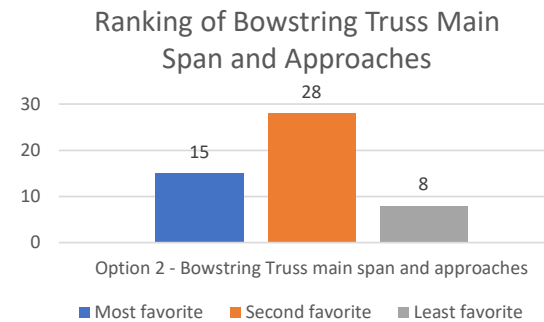
Structure Type



High Arches Alternating with Inverted Arch Truss



Alternating Upright and Inverted Bowstring Trusses



Online Open House #2 Survey Results

Structure Type

- 62% chose the Tall Arch option **as their favorite option.**
- 28% chose Bowstring Truss **as their favorite option**
- Both Tall Arch and Bowstring Truss were chosen as first or second favorite option by 80% of the respondents
- 63% chose the Tall Arch with Twin Girders approach option **as their least favorite option**
- **Participants strongly preferred a steel bridge (75%) to a wood bridge (13%)**

City of Sherwood

Hwy 99W Pedestrian
Bridge Project

High School Visual Impacts



View of High School from northbound Hwy 99W at SW Sunset Blvd intersection.

HWY 99W PEDESTRIAN BRIDGE PROJECT

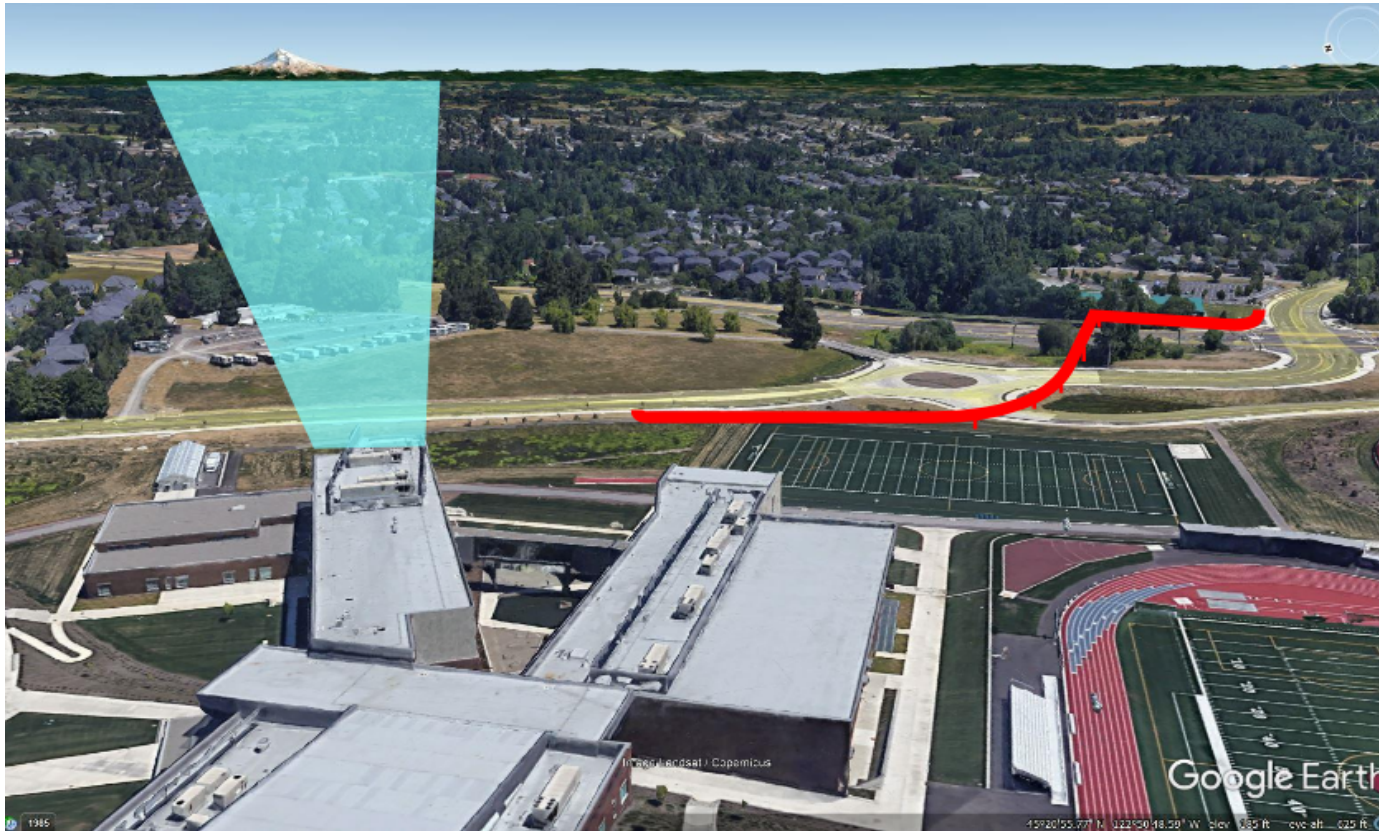


HIGH SCHOOL VISUAL IMPACTS

City of Sherwood

Hwy 99W Pedestrian
Bridge Project

High School Visual Impacts



View of Mt Hood from Sherwood High School

HWY 99W PEDESTRIAN BRIDGE PROJECT



HIGH SCHOOL VISUAL IMPACTS

City of Sherwood

Hwy 99W Pedestrian
Bridge Project

Alternatives Analysis Matrix

Goals	Alignment A2		
	Bridge Type		
	Tall Arch Main Span / Arch Approaches	Bowstring Truss Main Span and Approaches	Tall Arch Main Span / Twin Girder Approaches
Safety Improvement	The alignment eliminates all pedestrian crossing conflicts between Hwy 99W and SHS.		
Connectivity	The alignment provides direct connection between the YMCA, SHS, and the multiuse trail on SW Elwert Rd and SW Kruger Rd.		
Accessibility	All approaches to meet ADA.		
Desirability	Most direct route (1280' total route length).		
Utility Impacts	Overhead utility line adjustments and coordination with utilities required.		
Environmental Impacts	Moderate potential for wetland and/or vegetated corridor impacts.		
Signature Structure Potential	High (Bridge would be unique to Sherwood)	Moderate (Similar bridges in NW)	
Gateway Design Potential	All alternative structure types allow for a high gateway design potential.		
ROM Construction Cost	\$13M	\$14M	\$13M



Action Needed

Confirm selection of preferred alternatives for alignment, structure type and structure material or indicate additional information needed.

- Alignment Option A2 with East Landing Option 2 identified as preferred alignment at previous Council work session.
- Preferred Structure Type
 - ❖ High Arches Alternating with Inverted Arch Truss
 - ❖ Alternating Upright and Inverted Bowstring Trusses
 - ❖ High Arch Main Span with Twin Girder Approach
- Structure Material Type
 - ❖ Steel identified as preferred at prior Council session and preferred by survey respondents.

City of Sherwood

Hwy 99W Pedestrian Bridge Project

Next Steps:

- Complete 30% Design / Cost Estimating – 6/20